



CDI Catalog - 2011

Table of Contents

How to Order	4
F.A.Q.	15
Business Cards	16
Brochures	17
Make Your Business Shine!" Commercial Brochure	17
Residential Trifold Brochure	18
Large Commercial Trifold	19
Doorhangers	20
Neighborhood Butterfly Doorhanger.....	20
Santa Doorhanger.....	21
Snowman Doorhanger.....	22
Stocking Doorhanger	23
Square Doorhanger	24
Service Elves Doorhanger	25
DVDs	26
Flyers	27
"Brighten Up Your Holiday!" 1/3 Page Flyer	27
Variable 1/2 Page Flyer	28
"Making Spirits Bright. . ." 1/2 Page Flyer	29
Commitment Checklist Flyer.....	30
"It's Not Too Late!" Flyer	31
"What Distinguishes Christmas Decor?" Flyer	32
Forms	33
"About Your Decorating Service" Forms	33
"About Your Decoration Removal" Form	34
Decorating Lease Service Proposal (Year 1).....	35
Decorating Lease Service Proposal (Year 2).....	36
Decorating Proposal Form (Ownership)	37
Job Sheet Map.....	38
Light Right Proposal Form	39

Labels	40
Take-Down Labels	40
Blank Labels.....	40
Light Right.....	41
Portfolios.....	42
"We're Lighting the Way!" Display Portfolio.....	42
"Your Customized Holiday Display" Portfolio	43
Pocket Folders.....	44
Postcards	45
Small Postcards	45
Large Postcards	46
Posters	47
"Dream House" Poster	47
Stationary.....	48
Two-Color Envelopes	48
Two-Color Letterhead.....	49
Thank You Cards.....	50
Gift Cards.....	51
Scratch-Off Referral Cards	52
Yard Signs.....	53

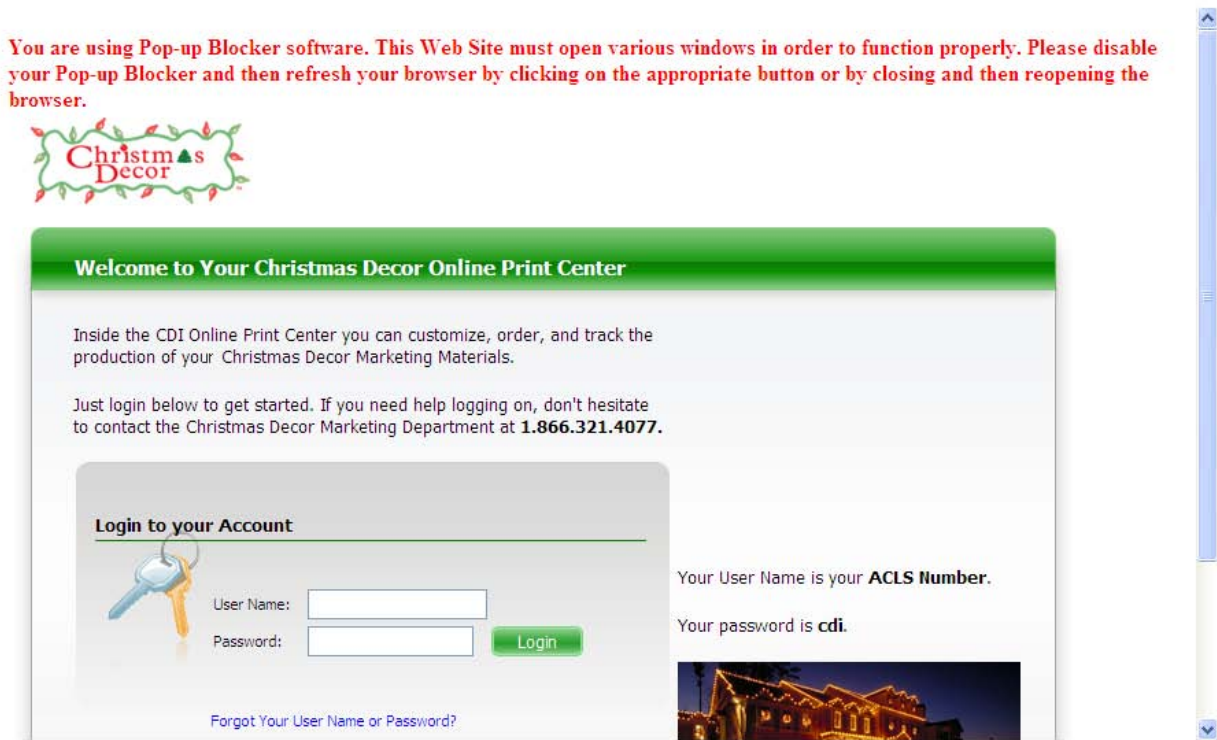
How to Order

On Your First Visit to the Online Store:

Turning Off Your Pop-Up Blocker:

When you first visit the Online Print Center, your screen may look like this with a message on the screen that says:

"You are using Pop-up Blocker software. This Web Site must open various windows in order to function properly. Please disable your Pop-up Blocker and then refresh your browser by clicking on the appropriate button or by closing and then reopening the browser."

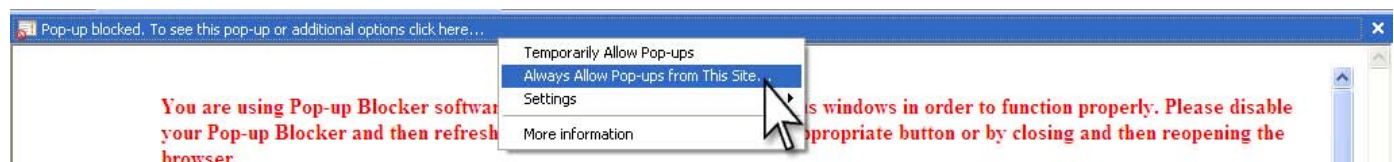


If so, it means you'll need to add the Online Print Center to your list of sites where Pop-Up windows are permitted.

To do this, click on the top beige bar on the screen that says:

"Pop-up blocked. To see this pop-up or additional options, click here. . ."

A drop-down menu will appear. In this list you'll want to select *"Always Allow Pop-ups from This Site. . ."*



You'll then get a box that says *"Would you like to allow pop-ups from 'printthisnow.com'?"* Click *"Yes"*.

This will add the Online Print Center to your list of sites where Pop-up windows are permitted and it won't appear again on future visits.

Logging-In

Your User Name should be your 5-Digit ACLS number (e.g. 12345).

Your password is cdi – all lowercase, three letters.



A screenshot of the website's login page. At the top, a green banner reads "Welcome to Your Christmas Decor Online Print Center". Below this, a light blue box contains introductory text: "Inside the CDI Online Print Center you can customize, order, and track the production of your Christmas Decor Marketing Materials. Just login below to get started. If you need help logging on, don't hesitate to contact the Christmas Decor Marketing Department at 1.866.321.4077." The main content area is titled "Login to your Account" and features a login form with fields for "User Name:" and "Password:", a "Login" button, and a link for "Forgot Your User Name or Password?". To the right of the form, text states "Your User Name is your ACLS Number." and "Your password is cdi." Below the text is a photograph of a house at night, illuminated with warm white Christmas lights.

If you receive a message that says "Wrong Username or Password. Try Again", double-check that you typed your ACLS number and password (cdi) correctly.

If it gives you the same message, double check that your CAPS Lock key is not turned on.

If it gives you the message again, call the CDI Helpline ((866) 653-9401) and ask for Tech Support. We'll double-check your account information and help you log in.

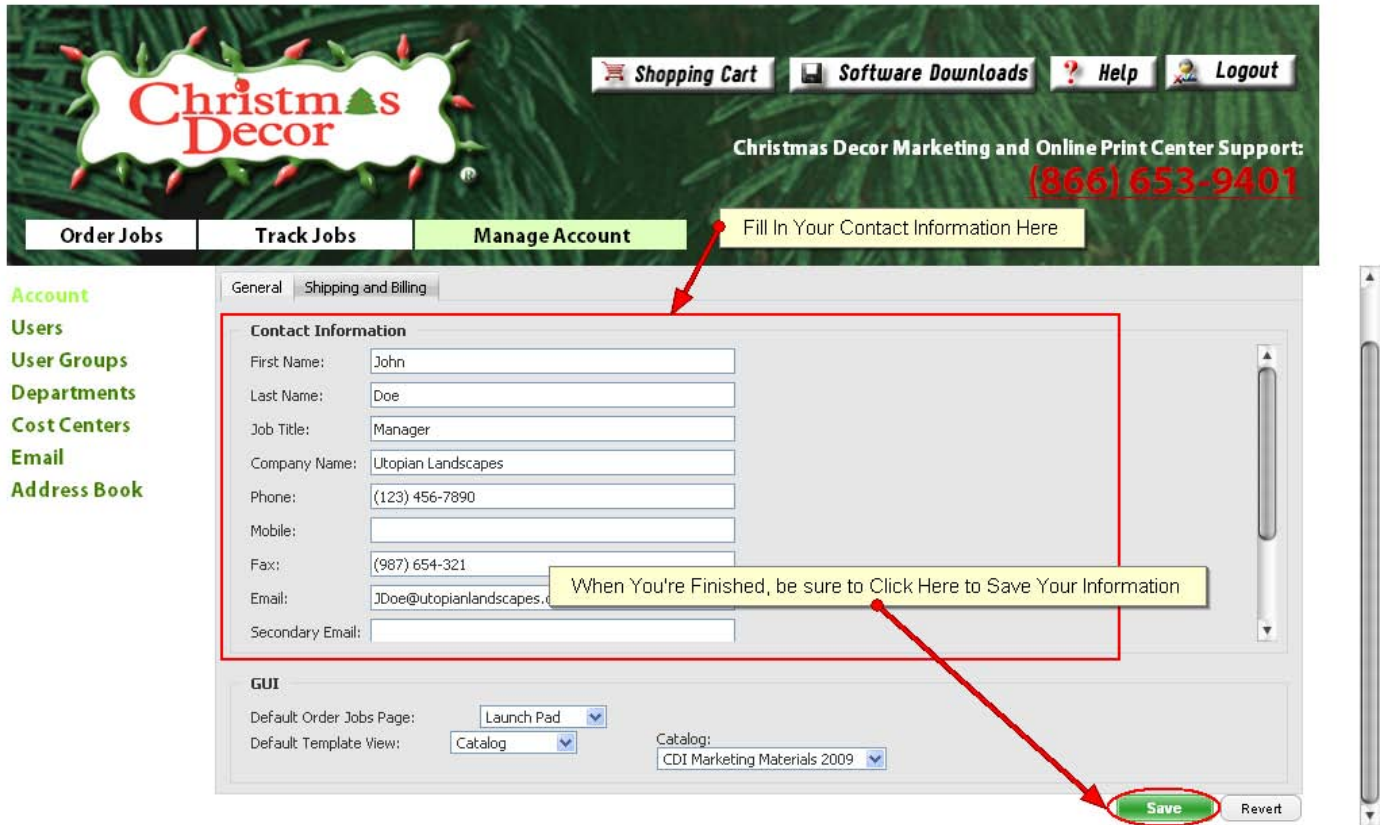
Getting Started – Manage Your Account

The first thing you'll want to do on your first visit to the CDI Online Store is to click on this "Manage Your Account" link.

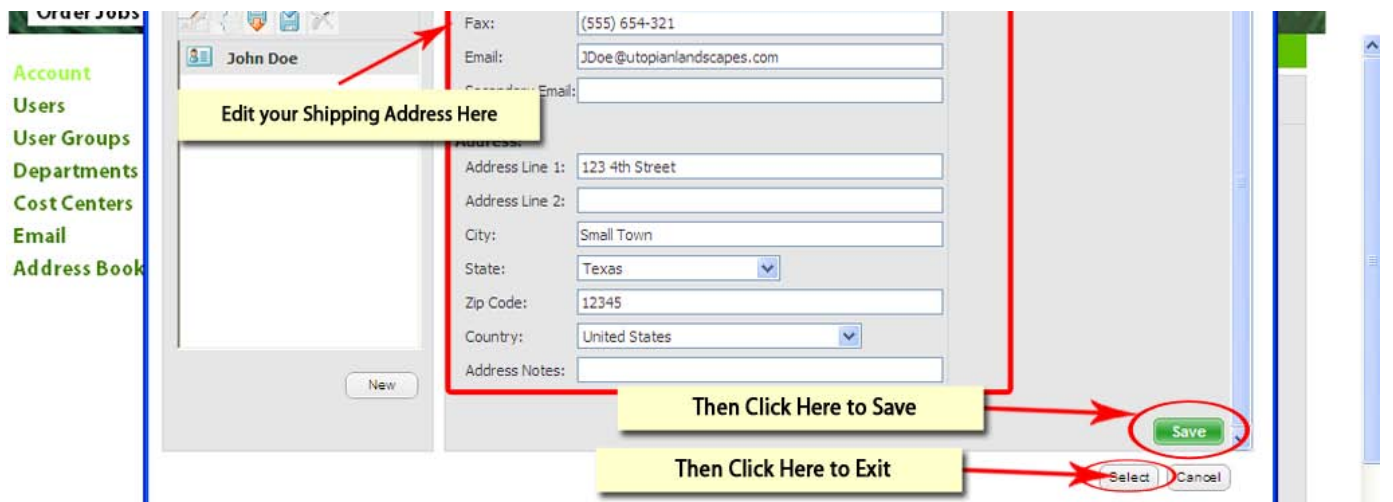
A screenshot of the website's navigation bar. The background is a green holly leaf pattern. On the left is the "Christmas Decor" logo. To the right are four buttons: "Shopping Cart", "Software Downloads", "Help", and "Logout". Below these is the text "Christmas Decor Marketing and Online Print Center Support: (866) 653-9401". At the bottom, there are three buttons: "Order Jobs", "Track Jobs", and "Manage Account". A red box highlights the "Manage Account" button, and a red arrow points to it from a yellow box below that contains the text "Click here to Manage Your Account Information.".

Why? Most of the document templates are programmed to take your contact information from here and use it to pre-populate (or “auto-fill”) the blanks for you to make ordering your marketing materials even faster. So rather than typing your contact information over-and-over again each time, it will now fill it in for you!

Just type your company’s contact information in the blanks as you’d like it to appear on your documents. In the e-mail box, put the e-mail address where you would like order confirmation e-mails to go. If you’d like to copy those e-mails to another address as well, you can put that address in the secondary e-mail box. Once you’re done be sure to click the “Save” button in the lower right corner to save all your information you just typed.



Next, click on the gray “Shipping and Billing” tab on the top of the gray box. Fill in your shipping information in the box that pops up. Once you’re done, be sure you click the “Save” button before you click “Exit”



To get back to the main page, you can click the CDI Logo in the upper left corner of the screen.

Step 1: Select Your Product

This is the storefront. This is where you choose which product you would like to order. Here's an image that gives a quick overview of the Online Storefront:

The screenshot shows the website's storefront with several key elements and annotations:

- Navigation:** "Return to Main Catalog" (top left), "Track Ordered Jobs" (top center), "Your Shopping Cart" (top right), "Shopping Cart" (top right), "Software Downloads" (top right), "Help" (top right), "Logout" (top right).
- Header:** "Christmas Decor" logo, "Christmas Decor Marketing and Online Print Center Support: (866) 653-9401", "Order Jobs", "Track Jobs", "Manage Account".
- Left Sidebar:** "Select Category" with links for Flyers(0), Butterfly Service Flyers(2), 1/2 Page Flyers(2), Doorhangers(4), Postcards(0), Small Postcards (6.75 x 3.75)(4), Large Postcards (8.5 x 5.5)(4), Business Cards(1).
- Main Content:** "CDI Print Center", "Featured Items for the Month of July:" (Light Right Stationary Packet, Christmas Decor Logo Letterhead, Christmas Decor Santa Claus Letterhead), "Stock Up for the Season!" (Stationary Sale ends July 31st), "Browse by Product Category:" (Flyers, Doorhangers, Postcards, Business Cards).
- Right Panel:** "Shopping Cart" (No items in cart, Total Price: \$0.00, View Cart), "Removed On Hold" (Remove, Add to Cart).
- Bottom Section:** "Select a Product:" (Snowman Doorhanger - Call for Quote on Back, Snowman Doorhanger - Offer on Back, Customizable Doorhanger - Offer on Back, Customizable Doorhanger - Call for Quote on Back).

Annotations with red arrows point to these elements:

- "Return to Main Catalog" (top left)
- "Track Ordered Jobs" (top center)
- "Your Shopping Cart" (top right)
- "CDI Click-to-Call Support Phone Number" (top right)
- "Your Shopping Cart" (right panel)
- "Your Saved Jobs" (right panel)
- "Featured Items" (main content)
- "Browse by Category Either Here or Here" (left sidebar)
- "To customize and order a product, Click this 'Add to Cart' button" (bottom section)
- "Select Individual Products Here" (bottom section)

On the right panel is your "Shopping Cart" and "Saved Jobs".

Your online "Shopping Cart" is much like a shopping cart in real life. It's a place to keep the products you

want until you checkout.

You can also move jobs out of your shopping cart and into "Saved Jobs" if you want to order a particular document next time rather than this time. These will stay "saved" even if you log out.

There are a couple of ways to navigate this area.

You can use this Product Category menu on the left side to see just products of a certain type (e.g. selecting the category "Flyers" here will show you all the different Flyers available in the center area.) This same list you'll find in the center of the page with big icons on green backgrounds.

Or you can choose an individual product from the big list on the main page from the center area underneath the product categories.

We'll try to have the most relevant items for each particular week towards the top with green backgrounds as our "Featured Items".

After you find the product you want to order, you click the button beneath its picture that says "Add to Cart" to get started ordering and/or customizing your document.

Step 2: Define Variable Information

Most items on the storefront are customizable, meaning you can add your own company name and contact information to the document. Only a few items are not customizable such as the "Complete Holiday Decorating Services" DVD or the Santa Claus Two-Color Letterhead. You should be able to determine the customizable icons based on their descriptions.

If you picked out a template that includes customization, this next screen is where you customize your template.

Shopping Cart Software Downloads Help Logout

Christmas Decor Marketing and Online Print Center Support:
(866) 653-9401

Order Jobs Track Jobs Manage Account

Sn Edit Your Information and Choose Your Favorite Images Here and the Back Photo!

Variable Information Preview

This Preview Image will Auto-Update as You Add Your Information

Page: 1

Customize

Address:
123 4th Street

City:
Small Town

State:
OH

Zip code:
12345

Featured Image Front:

Click Here Once You're Done to Go on to the Big Preview

Cancel Continue

If you change the quantity on the drop-down menu, the price table here will auto-update with the new price.

Once you're satisfied, click the "Continue" button in the lower right hand corner to move on to the preview screen. On this screen is a big preview of the document. Please note that it is a "low-resolution" image of

Before you can finish, you must look carefully over your proof and double-check that you've entered all your information correctly. If everything looks exactly right, check this box to submit your approval for print production.

The Printer is not responsible for any user submitted spelling or typing errors. By checking this box, you take full responsibility for what you've typed.

Order Jobs | Track Jobs | Manage Account

Snowman Doorhanger - Call for Quote on Back (Choose the Front Photo and the Back Photo!)

Variable Information | Preview

Page: 1

Total Price: N/A

Colour: * Colour: *
Sides: *
Number of pages in your job: *
Page Size Options: *
Paper: *

Attachment: no files are attached

Does everything look right on this document, but you want to order other items? Click on this "Add to Cart" button to send this item to your Shopping Cart. It'll wait there for you until you're ready to check out.

Or does everything look right and you're ready to order now? Click this "Add to Cart and Order" button to proceed directly to the checkout.

If you see a mistake, click this "Back" button to go back to the Customization screen to retype that field. Then click "Continue" to get back to this screen when you're finished.

I have reviewed the proof and accept it

Cancel | Back | Add to Cart | Add to Cart & Order

your document. That's why it looks a bit fuzzy. It will not look that way printed. Using a lower-quality image just ensures everything loads very quickly in the Print Ordering system.

You'll want to check very carefully to ensure all the information you entered in the previous screen is completely correct. Look carefully over all names, addresses, and phone numbers.

IMPORTANT: Check All Pages of Your Document!

Some templates have more than one page that you can customize. To switch pages, you use this dropdown in the top-corner.

Page: 1

Summary: Snowman Doorhanger - Call

Total Price

Colour: *
Sides: *
Number of pages in your job: *
Page Size Options: *
Paper: *

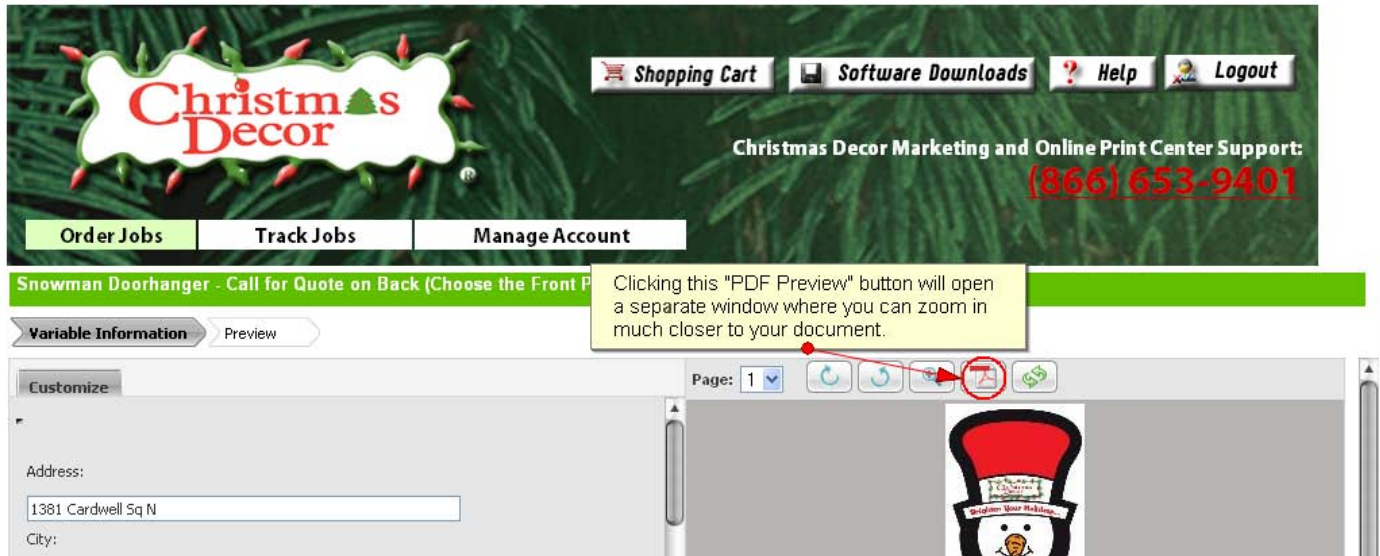
Attachment: no files are attached

Use this dropdown menu to view different pages of your document.

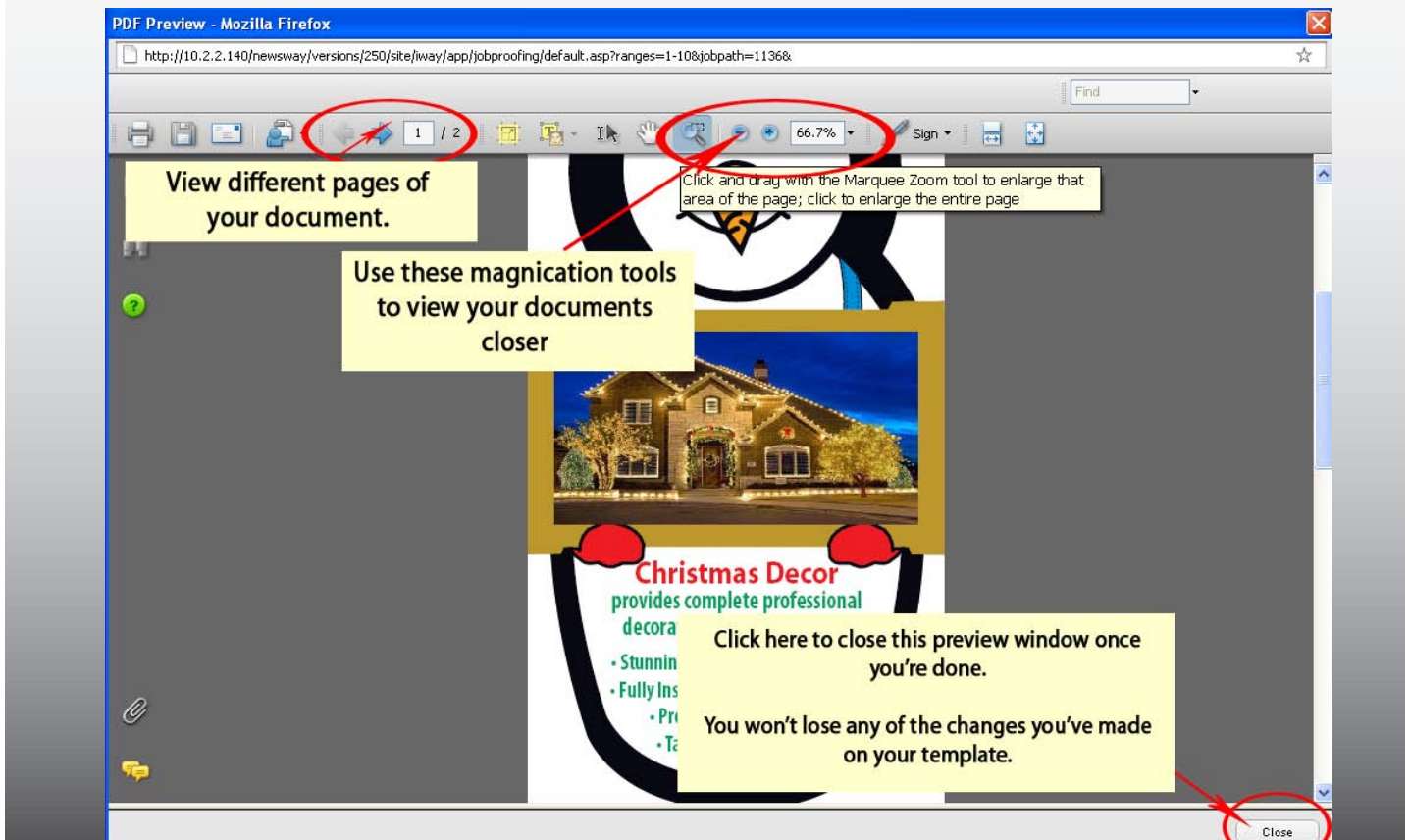
I have reviewed the proof and accept it

How can I see a really big close-up of my document?

By clicking this pdf preview button, a separate window will open where you can get a much better look at your document. To use this feature, you'll need to have the program Adobe Reader installed. If you don't have Adobe Reader installed on your computer, you can download and install it completely free from here: <http://www.adobe.com/products/acrobat/readstep2.html>.



In the preview window, you can use the Magnifying Glass tool to view your document closer. Once you're done looking, click the close button to return to editing your document.



If you see a mistake and you want to fix it, it's no problem. Just hit the "Back" button on the lower-right hand side of the screen under the preview pane to return to the edit screen you were just on. You can then fix the error and click "Continue" again to get back here when you're done.

If everything looks right, check the checkbox in the lower left-corner of the screen that says "I have reviewed the proof and accept it." This says that you're sure that everything is correct on your proof and it's ready to print. The Printer Provider takes no responsibility to user submitted spelling errors and typos.

From here, you have two choices. If you have more documents to order and you'd like to keep shopping, click this button that says "Add to Cart". This will send the document to your "shopping cart" (the icon on the top of the page) where it'll wait for you until you're ready. You'll then return to the store front and you can select another document to order.

If this is the last document or only document you're ordering and you're ready to check out, you can click this button, "Add to Cart and Checkout".

Step 3: Payment

When you're all done, you'll want to either click "Add to Cart and Checkout", the "Shopping Cart" icon on the upper right corner of the screen, or the "View Cart" button on the home page. All of these will take you to your shopping cart page. The Shopping Cart page will show you all the documents you're about to order.

If you'd like to save an item to order later, you click this button that says "Save for Later". The item will then go to your "Saved Jobs" that will be saved for you, even after you logout. You can move it back into your Shopping Cart from the "Saved Jobs" queue when you're ready to order it later.

Christmas Decor

Shopping Cart Software Downloads Help Logout

Christmas Decor Marketing and Online Print Center Support: 653-9401

To save this job for the future and not order it in this current order, click this "Save for Later" button to move it to your "Saved Jobs" queue. It will be saved for next time, even if you log out.

Adjust the Number of Products you want using the Quantity dropdown lists.

JOB #	Thumbnails	Job Name	Quantity	Price (\$)
1124		NEW Residential Trifold #1124	250	
1132		Snowman Doorhanger - Call for Quote on Back (Choose the Front Photo and the Back Photo) #1132	3500	\$546.99

If you don't want this document now or ever, you can delete it with this button. There is NO WAY to recover this item after you've deleted it.

Your total before shipping and taxes.

Update your subtotal by clicking the "Get Quote" button. You can do this as often as necessary each time you adjust your items or quantities.

When you're satisfied with your order, click the "Proceed to Checkout" button to finish placing your order.

Subtotal: \$546.99

Get Quote Proceed To Checkout

To remove an item from your cart and delete it entirely you click the delete button. Keep in mind there's no way to recover the job after you've done this. If you might want to order it next time, it's a good idea to use the "Save for Later" button instead unless you're completely sure you absolutely do not want that document now or ever.

To see a bigger image of an item in your cart, you can click the thumbnail (the little picture) next to it's name.

You can adjust the quantities (number of items) you'd like to order using the dropdown list beside each item.

By using the "Get Quote" button, you can see what your total will be for the documents without the shipping or tax. If you'd like to change it, you can adjust the quantities (number of items) using the dropdown list beside each item.

If you adjust the quantities of your items after clicking "Get Quote" you can click the "Get Quote" button again and it will update the price for the new quantity.

Once your cart has everything you want to order in it and you have the quantities set, you can click on the "Get a Quote" button. After you click the "Get a Quote" button another one will appear just beneath it that says "Proceed to Checkout". Click the "Proceed to Checkout" button.

Shipping Details

The next screen you'll see is the shipping details. If you've already defined this correctly in your "Account Settings" it should be all correct. If not, there are buttons that will allow you to correct the address or enter a new one entirely. You can also save multiple addresses you use often in your "address book".

The main thing you'll need to do here after making sure the shipping information is correct is to choose your shipping method from the drop-down list. As you'd expect, the sooner you request that it's delivered, the higher the price.

The screenshot shows the 'Christmas Decor' website interface. At the top, there is a navigation bar with links for 'Shopping Cart', 'Software Downloads', 'Help', and 'Logout'. Below this is a banner for 'Christmas Decor Marketing and Online Print Center Support' with a phone number '(866) 653-9401'. A secondary navigation bar includes 'Order Jobs', 'Track Jobs', and 'Manage Account'. The main content area is titled 'Checkout' and features a breadcrumb trail: 'Shipping Details' > 'Billing Details' > 'Confirmation'. The 'Shipping Details' section prompts the user to 'Please enter your shipping details:' and includes fields for 'Choose The Shipping Date:' (set to 08-06-2009 11:00) and 'Choose a Shipping Method:' (set to UPS Ground). Below these fields, the shipping address is displayed as 'Ship to this Address: John Doe, 1234 5th Street, Small Town, OH, 12345, United States', with an 'Edit' button. At the bottom of the shipping details section, there are three buttons: 'Show Address Book', 'Enter a New Shipping Address', and 'Ship To Multiple Addresses'. On the left side of the page, there is a vertical menu with links for 'Saved Jobs', 'Shopping Cart', 'Approval', 'Printing', 'Shipping', 'Received', and 'Search'.

Conditions" inside that sentence to read the full document.

After you've checked that box, click the button in the lower right corner that says "Place Your Order". After you click this, it will take you to Authorize.net (a grey screen) where you can safely and securely enter your credit card information to order.

Action Printing
A Communications Company

Action Printing A Communications Company

2407 82nd Street
Lubbock, Texas 79423
1-888-226-5533

Authorize.Net
SECURE CHECKOUT

Order Information * Required Fields

Invoice Number:
Description: Job # 1134
Total: US \$501.57

Payment Information

Pay by Credit Card Bank Account (USA only)

Card Number: * (enter number without spaces or dashes)

Expiration Date: * (mmyy)

Billing Information

Customer ID:

After you enter your information at the Authorize.net page, click on the "Submit" button on the bottom of that page.

Order Confirmation

After submitting your credit card information through Authorize.net, you will go back to the Print Summary Screen with this message on the top of the screen:

"Thank you for the order. Verify the status of your order in Track Jobs. For your convenience, it is recommended to print out this page."

Christmas Decor

Shopping Cart Software Downloads Help Logout

Christmas Decor Marketing and Online Print Center Support:
(866) 653-9401

Order Jobs **Track Jobs** Manage Account

Saved Jobs
Shopping Cart
Approval
Printing
Shipping
Received
Search

Checkout

Shipping Details Billing Details **Confirmation**

Thank you for the order. Verify the status of your order in Track Jobs. For your convenience, it is recommended to [Print](#) out this page.

Billing		Payment Method	
Billing Address:	John Doe 123 4th Street Small Town OH 12345 United States	Credit Card	PO Number:

Ship to John Doe

Shipping To:	John Doe 1234 5th Street Small Town OH 12345 United States	Shipping Date:	08-06-2009 , 11:00
		Shipping Method:	UPS Ground

Job#	Job Name	Job Details	Quantity	Price (tax excluded)
1124	NEW Residential Trifold #1124 Ordered by: CDI Product Tester 3	Cost Center: Marketing Department Ref Code:	250	\$0.00
1132	Snowman Doorhanger - Call for Quote on Back (Choose the Front Photo and the Back Photo) #1132 Ordered by: CDI Product Tester 3	Cost Center: Marketing Department Ref Code:	3500	\$563.81

Continue Shopping

You should also receive a confirmation e-mail about your order to the e-mail address associated with your account which you can define in your "Manage Account" tab.

You can track exactly where your documents are in the Print Center process by using the "Track Jobs" tab. If you have questions about your print order or are having difficulties with the online storefront, you can call the CDI Marketing Helpline ((866) 653-9401) and ask for the Print Center.

F.A.Q.

I get an error while logging in that says “Wrong Username or Password” What can I do?

If you receive a message that says “Wrong Username or Password. Try Again”, double-check that you typed your login name and password correctly.

If it gives you the same message, double check that your CAPS Lock key is not turned on.

If it gives you the message again, call 1-888-226-5533 and ask for Tech Support. We’ll double-check your account information and help you log in.

How can I see a really big preview of my document?

Above the little preview image, there is a PDF Preview button (it looks like a piece of paper with a red symbol on it). If you click that button, your document will open in a new window as a PDF document and you’ll be able to get a much better view. Once you’re done looking over your document, you can close that window to return to your order.

Can I save a document to order later?

Yes. Inside the shopping cart, beside each item there is a button that says “Save for Later”. If you click that button, it will move your item to the “Saved Jobs” queue. You can add a saved job back into your cart when you’re ready to order it. The Saved Jobs queue will save your customized documents even after you log out.

How can I delete a document from my cart?

To remove an item from your cart and delete it entirely you click the delete button next to it. Keep in mind there’s no way to recover the job after you’ve done this. If you might want to order it another time, it’s a good idea to use the “Save for Later” button instead unless you’re completely sure you absolutely do not want that document now or ever.

Why does the preview image look fuzzy?

It’s a “low-resolution” version of your document. It will not look that way printed. Using a lower-quality image ensures the site loads much more quickly.

When can I expect my order to arrive?

Orders ship via UPS Ground by default which arrives in 3 to 5 days. If you’d like, you can pay for more expedited shipping. Please note that the time it takes to print your documents is separate from the time it takes to ship your documents. You can find an estimation of print time in each product’s description.

At the end of checkout process I get an Error that says “The price for some Jobs cannot be calculated. Contact the Print Provider to receive the price” and I can’t complete my order.

The most common cause of this message is a missing shipping address. If you receive this message, click the “Back” button on the lower right corner of your screen to return to the “Shipping Details” screen. Double-check that you’ve entered a shipping address and do so, if you have not. Then click the “Continue” button to return to the checkout screen and see if the error has been removed. If the error persists, contact Action Printing Tech Support.

Business Cards

A full-color business card. Customize it with your own company name and contact information and then choose your favorite background image of lit houses. Produced in 3 days.



Item #438

500 Business Cards \$55.12 1,000 Business Cards \$65.00

Brochures

“Make Your Business Shine!” Commercial Brochure

A full-color trifold brochure aimed at Commercial customers. Includes a space to add your company name and contact information on the back panel. Produced in 4 days.



Item #412

250 Brochures	\$89.17	2,000 Brochures.....	\$342.85
500 Brochures	\$126.85	2,500 Brochures.....	\$410.82
1,000 Brochures.....	\$204.09	5,000 Brochures.....	\$747.74
1,500 Brochures.....	\$277.60		

Residential Trifold Brochure

A full-color trifold geared towards attracting Residential customers. Includes a space to add your company name and contact information on the back panel. Produced in 4 days.



Item #414

250 Brochures	\$74.62	2,000 Brochures.....	\$267.72
500 Brochures	\$102.66	2,500 Brochures.....	\$316.62
750 Brochures.....	\$127.62	5,000 Brochures.....	\$554.12
1,000 Brochures.....	\$157.73	10,000 Brochures.....	\$1,057.61
1,500 Brochures.....	\$212.21		

Large Commercial Trifold

An oversized full-color brochure aimed at Commercial customers. No customization is available on this item. Produced in 3 days.

We offer a full range of services for large and small businesses!

Eye-catching Roof Outlines
Takedown & Storage

Unsurspassed Services
Christmas Decor does more than just install your holiday decorations. Whether you choose indoor or outdoor services—our both—our goal is to design and install a great-looking display, and keep it looking great all season long. Knowledgeable, experienced technicians will make sure that your decor always looks its best. At the conclusion of the holidays, you won't have to use your valuable storage space—we offer efficient takedown and storage services. And, next year when the season arrives, your decorations will be ready to install.

Powerful Tree Lighting
Elegant Daytime Decor
Inviting Doors & Windows

Beautiful Interior Decor*

Superior Products
Early on, we found that the holiday decor found in retail stores just didn't meet our—and address our customers' needs. As the leaders in the industry, we have in the opportunity to refine our product line over the last 20 years. Manufactured to our own standards, we can only be the best, most consistent, contractor-grade products. We've also made adjustments in our factories that improve their aesthetic value. Rest assured that with Christmas Decor, you're getting the best on the market!

Lighting Products
Christmas lights are the foundation of any holiday decorating program. They create the warm, festive and festive atmosphere that will be viewed at night. Color, bright light or extremely temperature—and Christmas Decor lighting products apply exactly that! Our mini lights are available in a variety of colors, and feature tested, 3000-hour bulbs—more than 3 times the life of a standard non-bright bulbs. These lights are especially attractive in shrubs and trees. Our C-9 and C-7 lights feature 2500-hour bulbs with several different colors available. Powerful ridges, faces and windows are just a few of the things we can do with these lights! We assemble all lights on contractor-grade wire and sockets, giving you and your family years of enjoyment.

Commercial Greenery
Your business is probably open during the day—so you'll definitely want to include "daytime decor" in your decorating program. Daytime decor includes wreaths, garlands & other greenery that give your business a holiday "feel". All Christmas Decor greenery is made of the highest quality materials, with durable construction. Our wreaths range in size from 24" in diameter up to 44". Greenery is also available pre-lit, as well. You won't find better greenery ANYWHERE!

Giant Trees, Wreaths and Arches
Nothing draws more attention to your business than a huge summit tree, an attractive arch or a giant wreath! We stock trees up to 20 feet tall! We offer wreaths with diameters up to 12 feet! Attractive arches make a nice addition to any entrance to your business! Any of these items will make a nice centerpiece for any holiday decorating program—and they will knock the socks off of your customers! The quality and workmanship of all Christmas Decor products applies here! Check with your local Christmas Decor location for availability.

Specialty Items
Some businesses request the use of specialized decorations to develop identity, create additional flair or emphasize the shape size of their building. We carry a variety of large silhouette displays, pole-mounted decorations and motifs. We also have banner programs that can extend beyond the holiday season. Contact your local franchise for the availability of specialty items.

For more information, or to find service providers in other locations, visit our web site at www.ChristmasDecor.net

Christmas Decor
Professional Holiday & Event Decorating

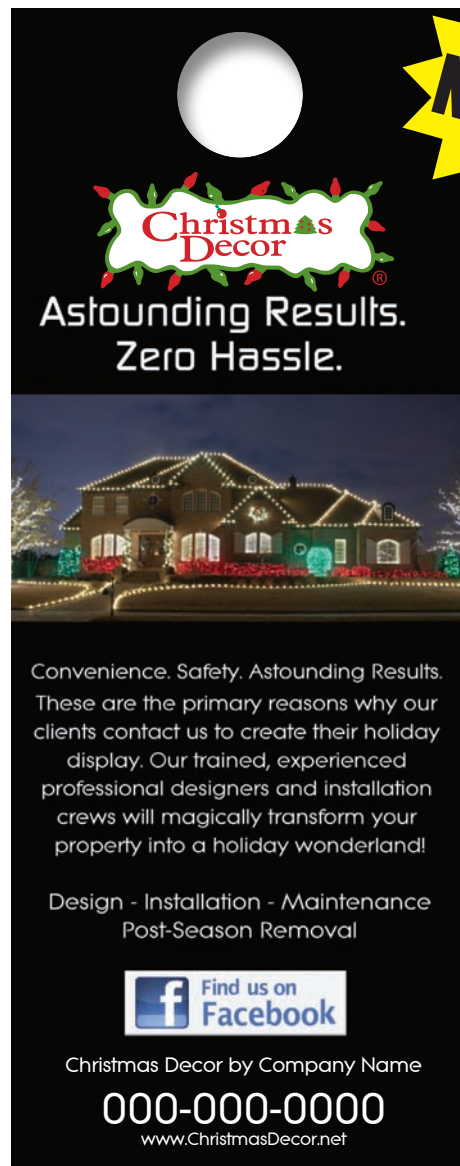
Item #353

25 Brochures	\$25.45	250 Brochures.....	\$169.00
50 Brochures	\$50.89	500 Brochures.....	\$202.78
100 Brochures.....	\$98.90	1,000 Brochures.....	\$424.00

Doorhangers

Neighborhood Butterfly Doorhanger

Greet your customers at their door with this a doorhanger. Customizable with contact information and favorite photo. Produced in 6 days.



Item #443

250 Doorhangers	\$89.17	1,000 Doorhangers.....	\$349.63
350 Doorhangers.....	\$153.04	2,500 Doorhangers.....	\$435.92
500 Doorhangers.....	\$197.27	3,500 Doorhangers.....	\$478.62
750 Doorhangers.....	\$273.95	5,000 Doorhangers.....	\$556.78

Santa Doorhanger

Greet your customers at their door with this doorhanger. Choose your favorite photo for the front and reverse. Includes a space for your own offer or call to action. Produced in 6 days.



Item #474

1,500 Doorhangers	\$451.61	5,000 Doorhangers.....	\$657.33
2,000 Doorhangers.....	\$476.85	7,500 Doorhangers.....	\$805.37
2,500 Doorhangers.....	\$512.05	10,000 Doorhangers.....	\$955.33
3,500 Doorhangers.....	\$563.91	12,500 Doorhangers.....	\$1,119.98

Snowman Doorhanger

Greet your customers at their door with this fun snowman-shaped doorhanger. Choose from six different lighted house pictures to feature on the front or the back. Choose whether you'd like to include a special discount or just a call to offer on the back. Produced in 6 days.



Item #341

1,500 Doorhangers	\$451.61	5,000 Doorhangers.....	\$657.33
2,000 Doorhangers.....	\$476.85	7,500 Doorhangers.....	\$805.37
2,500 Doorhangers.....	\$512.05	10,000 Doorhangers.....	\$955.33
3,500 Doorhangers.....	\$563.91	12,500 Doorhangers.....	\$1,119.98

Stocking Doorhanger

Greet your customers at their door with a doorhanger! New for 2011 is this new design shaped like a Christmas Stocking. Customizable with your contact information and favorite photos. All doorhangers are die cut to provide a hole at the top to slip over the doorknob.

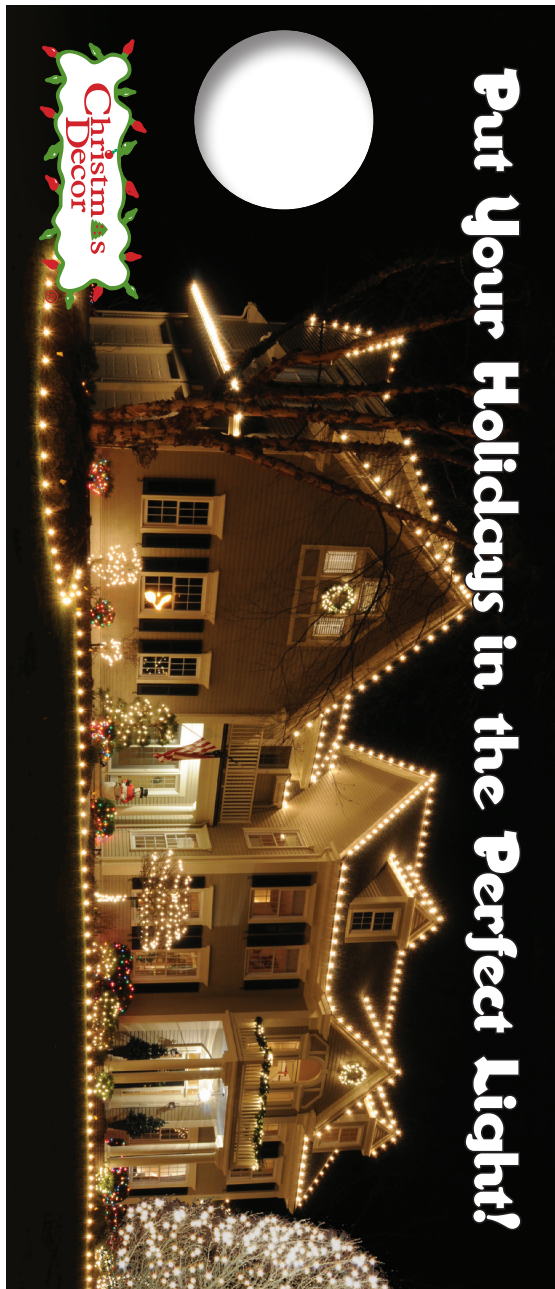


Item #499

1,500 Doorhangers	\$451.61	5,000 Doorhangers.....	\$657.33
2,000 Doorhangers.....	\$476.85	7,500 Doorhangers.....	\$805.37
2,500 Doorhangers.....	\$512.05	10,000 Doorhangers.....	\$955.33
3,500 Doorhangers.....	\$563.91	12,500 Doorhangers.....	\$1,119.98

Square Doorhanger

Greet your customers at their door with this a doorhanger. Choose your favorite from three back photos. You can choose to include a special offer on the back or just have a call to action. Produced in 6 days.



Item #442

1,000 Doorhangers	\$417.08
1,500 Doorhangers.....	\$451.61
2,000 Doorhangers.....	\$476.00
2,500 Doorhangers.....	\$512.05
3,500 Doorhangers.....	\$563.91
5,000 Doorhangers.....	\$657.33
7,500 Doorhangers.....	\$805.37

10,000 Doorhangers.....	\$955.33
12,500 Doorhangers.....	\$1,119.98
15,000 Doorhangers.....	\$1,279.00
20,000 Doorhangers.....	\$1,369.17
30,000 Doorhangers.....	\$2,360.46
50,000 Doorhangers.....	\$3,918.04

Service Elves Doorhanger

Redesigned for 2011! Full color 5.5"x8.5" flyer doorhanger. Includes the message "Your Christmas Decor 'Elves' Were Here Today!" Produced in 6 days.



000-000-0000
1-000-000-0000

**Your Christmas Decor
"Elves" Were Here Today!**

*We came out today, to check your lights,
to make your home shine nice and bright.
Feel free to call, if you need our skill,
with Christmas Decor, that's part of our deal.*

Here's What We Did Today:

- ★ _____
- ★ _____
- ★ _____
- ★ _____
- ★ _____

Technician Name: _____



We are a local business and sincerely appreciate your business and referrals!

See Reverse for Special offer for Friends and Family!



Christmas Decor
by
Action Printing

000-000-0000
1-000-000-0000



Give the Gift of Lights!



As Our Valued Customer,
you are well aware of the great benefits and high level of service that Christmas Decor offers.

If you are happy with the service we have provided, share the Holiday Spirit with someone you know and they will receive:

Just give them this flyer and help spread the love!



Item #503

100 Doorhangers \$66.79
250 Doorhangers..... \$116.25

500 Doorhangers..... \$191.10
1,000 Doorhangers..... \$339.70

DVDs

A promotional DVD which includes a programs for both Residential and Commercial Customers. It also includes a picture gallery of Christmas Decor displays. Each DVD comes in a colorful, protective case of heavy paper stock. Produced in 3 days.



Item #426

20 DVDs \$60.00 50 DVDs \$125.00

Flyers

“Brighten Up Your Holiday!” 1/3 Page Flyer

A full color 1/3 page flyer featuring images of Christmas Decor services and the message “Brighten Up Your Holidays!” Customizable with your company name and contact information. Produced in 4 days.

<p><i>Complete Decor Services, from Rooftops to Walkways!</i></p>	 <p>Christmas Decor by Action Printing 888.226.5533</p>
<p><i>Let your imagination and the professionals at Christmas Decor be your guide in turning your home into a festive wonderland of holiday cheer!</i></p> <p>Our trained team of professionals are focused on two things -- providing a beautiful holiday display and making your holiday season as enjoyable and safe as possible! Each hassle-free decoration package comes complete with</p> <p><i>Custom Design • Professional Installation</i> <i>Proactive Maintenance • Takedown & Storage</i></p> <p>Hassle-free service. Beautiful displays. Peace of mind. That’s the Christmas Decor Experience.</p> <p>www.christmasdecor.net</p>	 <p><input type="checkbox"/> Yes, I am interested in more information on custom seasonal decor.</p> <p>Name: _____</p> <p>Address: _____</p> <p>Phone: _____</p> <p>email: _____</p> <p>Best time of day to contact: _____ <input type="checkbox"/> AM <input type="checkbox"/> PM</p> <p>Please return with your payment or call Christmas Decor for your estimate.</p>

Item #350

500 Flyers	\$130.31	2,000 Flyers	\$435.72
750 Flyers	\$174.77	2,500 Flyers	\$521.23
1,000 Flyers	\$219.64		

Variable 1/2 Page Flyer

Flyer where you can choose from 4 different front images. The back features the "Call for a Quote" call to action and you can choose from 4 back images. Includes space to customize a percentage off discount. Produced in 5 days.

Celebrate the Beauty of the Holidays with the Very Best in Decorating Elegance...

At Christmas Decor, we know you want your home decorated correctly, promptly and attention to detail. We work!

Christmas Decor

Christmas Decor

ing 20% on a g experience!
(09)

9 out of 10 Clients Give Christmas Decor an Outstanding Approval Rating 2007 and 2008 National Client Surveys

Christmas Decor by Utopian Landscapes
1234 Holly Lane / North Pole, Alaska
777.777.777
555.555.5555
www.ChristmasDecor.net

Item #447

3,000 Flyers	\$355.30	25,000 Flyers.....	\$959.23
5,000 Flyers.....	\$412.30	30,000 Flyers.....	\$1,109.60
7,500 Flyers.....	\$474.60	35,000 Flyers.....	\$1,263.41
10,000 Flyers.....	\$519.46	40,000 Flyers.....	\$1,413.77
12,500 Flyers.....	\$585.60	50,000 Flyers.....	\$1,721.36
15,000 Flyers.....	\$662.51	75,000 Flyers.....	\$2,493.73
20,000 Flyers.....	\$808.02	100,000 Flyers.....	\$3,266.03

“Making Spirits Bright. . .” 1/2 Page Flyer

A full color flyer featuring the message “Making Spirits and Homes Bright This Season!”. Customizable with your company’s name and contact information. 8.5” x 5”. Produced in 4 days.

Making Spirits and Homes Bright this Season!

Experience the magic of the holidays with some help from Christmas Decor!

Our professionals can handle your holiday decorating hassles--from start to finish--and provide astounding results!

Christmas Decor

www.christmasdecor.net

Roof Lines *Ground Lighting* *Window Lighting* *Tree Lighting* *Garland and Wreaths*

days!

y decorating! s available.

urning your bine the

distinct features of your home with creativity and skill, resulting in a display that will provide joy and entertainment to family, friends, and neighbors!

Our trained team of professionals are focused on two things -- providing a beautiful holiday display and making your holiday season as enjoyable and safe as possible! Each hassle-free decorating package comes complete with:

- Custom Design
- Professional Installation
- Proactive Maintenance
- Takedown & Storage

Hassle-free service. Beautiful displays. Peace of mind. That's the Christmas Decor Experience.

Item #348

1,500 Flyers	\$120.00	10,000 Flyers	\$550.00
3,000 Flyers	\$210.00	20,000 Flyers	\$1,022.85
5,000 Flyers	\$304.00		

Commitment Checklist Flyer

A great tool to help you in building a solid and trustworthy relationship with your clients. The checklist will help set high expectations for you to demonstrate your commitment to exceeding client expectations. Produced in 3 days.



We create remarkable and memorable holiday experiences.



Service Commitment Checklist

Christmas Decor is committed to providing the highest levels of service - not only during the installation - but also AFTER. Our goal is to provide a remarkable experience for you and truly brighten your holiday season, all while building a solid and trustworthy relationship. In other words, we want to earn your respect and trust as a reliable contractor through the delivery of value by creating the highest level of satisfaction in your holiday decorating wants and needs, and by following up on our promises. The checklist below is to set high expectations for you and to demonstrate our commitment to exceeding those expectations. Please use this checklist as a "report card" for our service.

Initial Contact: Christmas Decor Staff

- Responded quickly to my initial inquiry and were friendly and knowledgeable

Holiday Lighting Design Consultation: Professional Design Consultant

- Was prompt and had a professional uniformed appearance.
- Included me in the design process by incorporating my opinions, providing me adequate information, and showing me examples of their work.
- Explained to me Christmas Decor's Service Initiative and complete responsibility for the integrity of my display

Installation

- A uniformed and courteous crew conducted my installation and was able to answer any questions I had.
- My display was tailored to my home and free of unsightly wires or cords and my property was left in as good or better condition.

Holiday Season Follow up

- A Christmas Decor representative provided me with adequate contact information in the event that I needed service.
- My invoice was the same price we agreed upon.
- During the course of the holiday season I had a minimum of 1 courtesy service visit.
- A representative of Christmas Decor contacted me regarding my satisfaction after my installation was complete.
- In the event of a service issue, Christmas Decor responded to my notice within 24 hours and resolved the issue within 48 hours (weather permitting).

Display Disassembly

- A Christmas Decor representative contacted me to schedule my display disassembly.
- My display was disassembled in a timely manner by a friendly and professionally uniformed crew.
- My property was left in as good or better condition.
- A representative of Christmas Decor contacted me regarding my satisfaction after my display disassembly was complete.
- A Christmas Decor representative conducted a "Spring Clean Up", or a subsequent visit, to ensure all parts and pieces of my display were removed.

Item #456

25 Flyers	\$36.06	150 Flyers	\$118.20
50 Flyers	\$52.53	200 Flyers	\$149.85
100 Flyers	\$85.64		

“It’s Not Too Late!” Flyer

A great tool to help you in building a solid and trustworthy relationship with your clients. The checklist will help set high expectations for you to demonstrate your commitment to exceeding client expectations. Produced in 3 days.



transform
 you Can
 Get
 Installation
 Decor Can:



- maintain it through the season
- Remove It After The Holiday

We Deliver Convenience & Results!

(###) ###-####

www.ChristmasDecor.net


Item #505

2,500 Flyers	\$315.86	10,000 Flyers.....	\$500.73
5,000 Flyers.....	\$386.35		

Forms

“About Your Decorating Service” Forms

Black and white carbonless form describing the terms of decoration. Includes a tear-off copies both for your client and your records. Includes options to customize your company name and number in the upper right corner. Produced in 4 days.


Last Name _____ First Name _____ Address _____ Phone _____ Company _____		Your Local Service Provider: Christmas Decor by Your Company Name (###) ###-####																																	
About Your Decorating Service																																			
Our highly-trained installation team decorated your home / business today. We have included this information sheet to help answer any questions you may have about the service we have provided today, as well as advise you as to what to expect from us throughout the season.																																			
First, we ask that you light your display for the next four evenings as though it were "the season". This will allow the lights to 'burn-in' and will allow most issues, if any, to surface. We will follow up after this test period or around Thanksgiving to ensure that your display is operating properly and that any expired bulbs are replaced and/or repaired. We want to make sure that your enjoyment of your decorations is maximized! If you elect to temporarily discontinue lighting your display after the test period, please carefully unplug any cord(s) from the timer(s) outlet while leaving the timers themselves plugged in to the originating outlet.																																			
Our Christmas Decor 'elves' will be out to inspect your lighting display during the Christmas Season to ensure everything is in tiptop shape. If you have any needs before then, please let us know.																																			
<input type="checkbox"/> New/Add-On Decor Items We guarantee the quality of our workmanship and products. If you have any problems with your new lights or decorations please notify us immediately. We want to correct them as soon as possible. Please note that repairs that are due to vandalism, neglect, or extraordinary weather conditions will be billed separately.																																			
<input type="checkbox"/> Reinstall Decor Items – Repairs, Replacements, and Added Lights All decorations have been inspected and any repairs or replacements required have been made prior to reinstallation. Natural growth of trees and/or shrubs may require that we add lights from time to time to ensure that the display reflects our desired appearance. We will add these lights as deemed necessary and bill accordingly.																																			
Decoration Removal and Storage After the season, we will carefully remove decorations from your property and prepare them for storage. Unless you have scheduled a specific time for removal, we will complete this as soon as possible, weather and workloads permitting. We will provide seasonal storage of your decorations that insures they will be available for a timely reinstallation next season.																																			
Added Lights Required to Complete Scheduled Work																																			
<table border="1" style="width: 100%; border-collapse: collapse;"> <thead> <tr> <th style="text-align: left;">*Reinstallation Items</th> <th>Scheduled Qty</th> <th>Added Qty</th> <th>New Qty</th> </tr> </thead> <tbody> <tr><td> </td><td> </td><td> </td><td> </td></tr> <tr><td> </td><td> </td><td> </td><td> </td></tr> <tr><td> </td><td> </td><td> </td><td> </td></tr> </tbody> </table>		*Reinstallation Items	Scheduled Qty	Added Qty	New Qty													<table border="1" style="width: 100%; border-collapse: collapse;"> <thead> <tr> <th style="text-align: left;">**New/Add-On Items</th> <th>Scheduled Qty</th> <th>Added Qty</th> <th>New Qty</th> </tr> </thead> <tbody> <tr><td> </td><td> </td><td> </td><td> </td></tr> <tr><td> </td><td> </td><td> </td><td> </td></tr> <tr><td> </td><td> </td><td> </td><td> </td></tr> </tbody> </table>		**New/Add-On Items	Scheduled Qty	Added Qty	New Qty												
*Reinstallation Items	Scheduled Qty	Added Qty	New Qty																																
**New/Add-On Items	Scheduled Qty	Added Qty	New Qty																																
<small>* Additional lights for Reinstallation items will be billed in addition to proposed amount, as they were required due to plant growth since last service. ** Additional lights required for New Items will not be billed in addition to proposed amount. However, they will be included in next year's reinstallation proposal.</small>																																			
Customer Added Items (Items added at the jobsite)			Customer Approval _____ Date ____/____/____																																
<table border="1" style="width: 100%; border-collapse: collapse;"> <thead> <tr> <th style="text-align: left;">Customer Owned Items</th> <th>Total Qty Bid</th> <th>Total Qty Installed</th> </tr> </thead> <tbody> <tr><td> </td><td> </td><td> </td></tr> <tr><td> </td><td> </td><td> </td></tr> <tr><td> </td><td> </td><td> </td></tr> </tbody> </table>		Customer Owned Items	Total Qty Bid	Total Qty Installed										<table border="1" style="width: 100%; border-collapse: collapse;"> <thead> <tr> <th style="text-align: left;">New/Add-On Items</th> <th>Total Qty Bid</th> <th>Total Qty Installed</th> </tr> </thead> <tbody> <tr><td> </td><td> </td><td> </td></tr> <tr><td> </td><td> </td><td> </td></tr> <tr><td> </td><td> </td><td> </td></tr> </tbody> </table>		New/Add-On Items	Total Qty Bid	Total Qty Installed																	
Customer Owned Items	Total Qty Bid	Total Qty Installed																																	
New/Add-On Items	Total Qty Bid	Total Qty Installed																																	
<input type="checkbox"/> Special Work: (Per man-hour billing) _____ # workers for _____ Hours = _____ Total Manhours <input type="checkbox"/> Timers Installed: # _____ Type _____ Timer Settings: PM - On _____ Off _____ AM - On _____ Off _____ Daytime Decor: <input type="checkbox"/> Installed Today <input type="checkbox"/> Scheduled for installation after _____ <input type="checkbox"/> Follow-up Call Needed for _____																																			
Comments: _____																																			
We always appreciate your business and wish you a joyous Holiday Season and a Happy New Year!																																			
Christmas Decor Representative _____ Date ____/____/____ Crew _____ # of workers _____ Start time _____ Stop time _____ Break Total _____																																			

Item #149

300 Forms \$75.43 1,000 Forms \$131.09
 500 Forms \$92.05

"About Your Decoration Removal" Form

Black and white carbonless form describing the terms of Decoration Removal. Includes a tear-off copies both for your client and your records. Customize with your company name and phone number in the upper right corner. Produced in 4 days.

Last Name	First Name		<i>Your Local Service Provider:</i> COMPANY NAME Address City, State, Zip Phone/Fax website/email address	
Address				
Phone				
Company				

About Your Decoration Removal

We carefully removed and packed your lights and decorations today. These decorations have been placed in containers we have provided for hassle-free storage. We have also mapped out exactly where your decorations were placed this season to ensure consistent recreation of your decorative theme again next season.

Seasonal Storage
 If you have elected to have Christmas Decor store these decorations, they have been taken to our storage facility. This service should provide convenient scheduling of your reinstallation next season. All decorations will be tested at our facility prior to their reinstallation.

If checked, we are providing seasonal storage of your decorations.

If there were additional decorations to remove that were NOT on the original installation order they are listed in the box below.

Decor Type	Description	Location	Color	Quantity

We will add the above items to your decorating theme map so that they become a part of your regular Christmas Decor program in the future.

Thank you for your business and have a joyous and prosperous New Year!

Christmas Decor Representative	Date
--------------------------------	------

Crew _____ # of workers _____ Start time _____ Stop time _____ Break Total _____


AYDR04

Item #345

300 Forms	\$75.43	1,000 Forms	\$131.09
500 Forms	\$92.05		

Decorating Lease Service Proposal (Year 1)

A 3-part carbonless form for first year customers who are leasing their lights with Terms and Conditions of the lease on the reverse side. Includes a space to customize with your company name and contact information. Produced in 4 days.

LAST		FIRST						Your Local Service Provider:			
Billing Address								COMPANY NAME			
City	ST	Zip						Address			
Service Address								City, State, Zip			
City	ST	Zip		Phone/Fax							
Phone				email							
Company		Email		DECORATING SERVICE PROPOSAL							
Contact:		Appointment:		Date Sold:							
Installation:		Daytime Decor:		Take Down:							
* Installation Incentive of _____% until _____/_____/_____ AMP=_____								Your Decor Options			
Decor Type	Location / Description	Map Code	Color	Qty	Level	RT	SC	Pricing	*	Rec	OK
Roof Lighting											
Fascia											
Ridges											
Windows / Features											
Tree Lighting											
Canopy Trunk Branch											
Canopy Trunk Branch											
Canopy Trunk Branch											
Canopy Trunk Branch											
Shrubs											
Ground Lighting											
Stakes											
Daytime Decor											
Garland											
Wreaths											
Bows											
Other:											
Timers											
Subtotals											
Proposal Date / / By _____ Accepted Date / / By _____ CC# _____ Exp: _____ Bill: Full Amount Deposit Balance				Service Renewal Incentives †Elf Dollar Accrual _____ % **Multi-year Option _____ % Total Renewal Incentives _____ % <input type="checkbox"/> **Multi-Year Option for _____ Years				**Multi-year Decor Total _____ Sales Tax _____ Total Due _____ Deposit _____ Balance _____			


Item #312

300 Forms \$180.18 500 Forms \$262.21

Decorating Lease Service Proposal (Year 2)

A 3-part carbonless form for first year customers who are leasing their lights with Terms and Conditions of the lease on the reverse side. Includes a space to customize with your company name and contact information. Produced in 4 days.

LAST	FIRST
Billing Address	
City	ST Zip
Service Address	
City	ST Zip
Phone	Fax
Company	



DECORATING SERVICE PROPOSAL

Your Local Service Provider:

Company Name
 Address Line 1
 City, State ZIP
 (###) ###-####
Fax: (###) ###-####
 www.ChristmasDecor.net

Contact: _____	Appointment: _____	Date Sold / Renewal: _____
Installation: _____	Daytime Decor: _____	Take Down: _____

*Early Installation Incentive of ____% until ____/____/____ L.B = _____

Decor Type	Location / Description	Map Code	Color	Qty	Level	Rate	SC	REINSTALL DECOR		NEW DECOR	
								REGULAR PRICING	*SPECIAL PRICING	REGULAR PRICING	*SPECIAL PRICING
Roof Lighting											
Fascia											
Ridges											
Windows / Features											
Tree Lighting											
Canopy Trunk Branch											
Canopy Trunk Branch											
Canopy Trunk Branch											
Canopy Trunk Branch											
Shrubs											
Ground Lighting											
Stakes											
Daytime Decor											
Garland	Door										
Wreaths											
Bows											
Timers											
SUBTOTALS											

Installation Accessories @ Cost (IAC) for New Items Only _____% of New Decor

Bid Given	/ /
By	
Accepted	/ /
By	
C C #	Exp:
Bill:	<input type="checkbox"/> Deposit <input type="checkbox"/> Balance <input type="checkbox"/> Take Down

****TAKE DOWN SERVICE**

_____% Reinstall Decor _____

_____% New Decor _____

Storage Service _____

Total Take Down/Storage _____

**Includes Removing and Packing


	Reinstall, New, IAC
	Take Down/Storage
	Sales Tax
	Total Due
	Less Deposit
	Balance

Item #344

250 Forms \$172.21 500 Forms \$252.13

Decorating Proposal Form (Ownership)

A 3-part carbonless form for customers who are purchasing their lights with Terms and Conditions of the lease on the reverse side. Includes a space to customize with your company name and contact information. Produced in 4 days.

<table border="1" style="width:100%; border-collapse: collapse;"> <tr><td style="width:50%;">LAST</td><td style="width:50%;">FIRST</td></tr> <tr><td colspan="2">Billing Address</td></tr> <tr><td>City</td><td>ST Zip</td></tr> <tr><td colspan="2">Service Address</td></tr> <tr><td>City</td><td>ST Zip</td></tr> <tr><td>Phone</td><td>Fax</td></tr> <tr><td colspan="2">Company</td></tr> </table>	LAST	FIRST	Billing Address		City	ST Zip	Service Address		City	ST Zip	Phone	Fax	Company		 <p>CHRISTMAS DECOR</p>	<p><i>Your Local Service Provider:</i></p> <p>Company Name Address Line 1 City, State ZIP (###) ###-#### Fax: (###) ###-#### www.ChristmasDecor.net</p> <table border="1" style="width:100%; border-collapse: collapse;"> <tr> <td>Contact: / /</td> <td>Appointment: / /</td> <td>Date Sold / Renewal: / /</td> </tr> <tr> <td>Installation: / /</td> <td>Daytime Decor: / /</td> <td>Take Down: / /</td> </tr> </table>	Contact: / /	Appointment: / /	Date Sold / Renewal: / /	Installation: / /	Daytime Decor: / /	Take Down: / /
LAST	FIRST																					
Billing Address																						
City	ST Zip																					
Service Address																						
City	ST Zip																					
Phone	Fax																					
Company																						
Contact: / /	Appointment: / /	Date Sold / Renewal: / /																				
Installation: / /	Daytime Decor: / /	Take Down: / /																				
<p>DECORATING SERVICE PROPOSAL</p> <p>*Early Installation Incentive of _____ % until _____ / _____ / _____ L B = _____</p>																						
		REINSTALL DECOR	NEW DECOR																			
Decor Type	Location / Description	Map Code	Color	Qty	Level	Rate	SC	REGULAR PRICING	*SPECIAL PRICING	REGULAR PRICING	*SPECIAL PRICING											
Roof Lighting																						
Fascia																						
Ridges																						
Windows / Features																						
Tree Lighting																						
Canopy Trunk Branch																						
Canopy Trunk Branch																						
Canopy Trunk Branch																						
Canopy Trunk Branch																						
Shrubs																						
Ground Lighting																						
Stakes																						
Daytime Decor																						
Garland	Door																					
Wreaths																						
Bows																						
Timers																						
SUBTOTALS																						
<input type="checkbox"/> Installation Accessories @ Cost (IAC) for New Items Only _____ % of New Decor																						
Bid Given / / By _____ Accepted / / By _____ C C # _____ Exp: _____ Bill: <input type="checkbox"/> Deposit <input type="checkbox"/> Balance <input type="checkbox"/> Take Down		**TAKE DOWN SERVICE <input type="checkbox"/> _____ % Reinstall Decor _____ <input type="checkbox"/> _____ % New Decor _____ <input type="checkbox"/> Storage Service _____ Total Take Down/Storage _____ <small>**Includes Removing and Packing</small>				<table border="1" style="width:100%; border-collapse: collapse;"> <tr><td>Reinstall, New, IAC</td><td></td></tr> <tr><td>Take Down/Storage</td><td></td></tr> <tr><td>Sales Tax</td><td></td></tr> <tr><td>Total Due</td><td></td></tr> <tr><td>Less Deposit</td><td></td></tr> <tr><td>Balance</td><td></td></tr> </table>		Reinstall, New, IAC		Take Down/Storage		Sales Tax		Total Due		Less Deposit		Balance				
Reinstall, New, IAC																						
Take Down/Storage																						
Sales Tax																						
Total Due																						
Less Deposit																						
Balance																						

Item #146

250 Forms \$180.18 500 Forms \$262.21

Light Right Proposal Letterhead

This document features a two-color letterhead on the front side with the CDI Logo and Santa in the background. The reverse side has Christmas Decor Terms and Conditions in black and white. No customization is available for this item. Produced in 3 days.



Item #495

500 Forms \$60.00 1,000 Forms \$89.00

Labels

Take-Down Labels

Labels with peel-off adhesive backing for marking boxes as you take-down your clients' lights so identification is quick and simple during next year's decorating. Produced in 4 days.

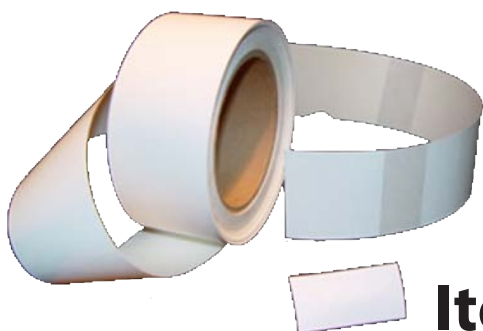


Item #165

500 Labels	\$52.91	1,000 Labels	\$47.62
------------------	---------	--------------------	---------

Blank Labels

Labels with peel-off adhesive backing for marking boxes as you take-down your clients' lights so identification is quick and simple during next year's decorating. Produced in 4 days.



500 Labels	\$39.00
1,000 Labels	\$78.00

Item #280

Portfolios

“We’re Lighting the Way!” Display Portfolio

A portfolio to show off your decorating capabilities to your client. Includes beautiful, full-color pages coated with a shiny and durable finish all contained in a protective black binder. Produced in 3 days.

Display Portfolio



Item #274

1 Portfolio	\$26.93	3 Portfolios.....	\$59.00
2 Portfolios.....	\$49.00		

“Your Customized Holiday Display” Portfolio

A portfolio to show off your decorating capabilities to your client. Includes beautiful, full-color pages coated with a shiny and durable finish all contained in a protective, black binder. Produced in 3 days.

Your Customized Holiday Display

Presented by

Christmas Decor™

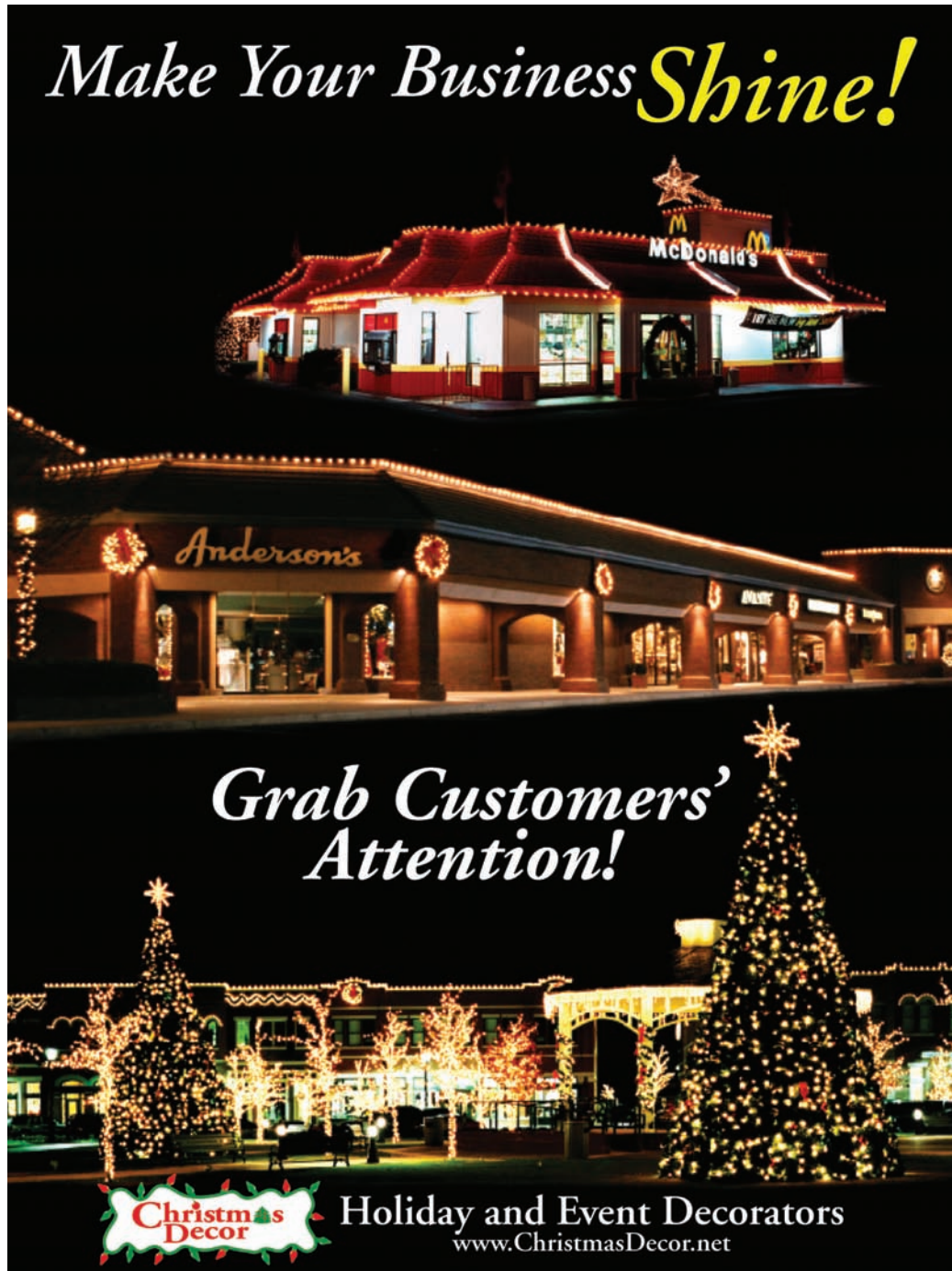
The Pioneers of the Holiday & Event Decorating Industry

Item #335

1 Portfolio	\$26.93	3 Portfolios.....	\$59.00
2 Portfolios.....	\$49.00		

Pocket Folders

Keep all your documents organized and protected in this CDI Full-Color Pocket Folder. Features images of both commercial and residential displays on heavy, UV-Coated paper stock. No customization is available for this item. Produced in 3 days.



Item #168

25 Folders	\$49.00	100 Folders.....	\$129.00
50 Folders.....	\$89.00		

Postcards

Small Postcards

Small Postcards (3.75x5.75) with the choice from three front images and four back messages. Produced in 5 days.

Front Design Choices:



Back Design Choices:

"Do Not Have. . ."

Because most of us really don't have:

- enough time
- a love of climbing ladders
- the right amount of patience
- all the right lights and decorations

for holiday decorating, there's Christmas Decor. We'll decorate your home correctly, promptly and do it with the greatest attention to detail giving you that perfect holiday look.

We're a great way to simplify your holiday season. Contact us for a free estimate today!

Christmas Decor
by Utopian Landscapes
1234 Holly Lane / North Pole, Alaska
777.777.777
555.555.5555
www.ChristmasDecor.net



Special Offer

You'll find Christmas Decor a convenient option to making your holiday decorating very, very easy because we:

- Produce Impeccable and Stunning Designs
- Are Fully Insured
- Provide First-Class Expertise
- Deliver Pro-Active Maintenance
- Provide No-Worry Take Down

Contact us today about saving
**20% on a hassle-free,
holiday decorating experience!**
(Offer Ends October 31, 2009)

Christmas Decor
by Utopian Landscapes
1234 Holly Lane / North Pole, Alaska
777.777.7777 • 555.555.5555
www.ChristmasDecor.net



"Q&A"

Q: Why let the chores of the season get in the way of the joys of the season?

A: Don't! We'll decorate your home correctly, promptly and with the greatest attention. Our trained and insured decorating experts will transform your home into a holiday wonderland.

Contact us right away to simplify your holidays so you can enjoy with one less thing to worry about.

Christmas Decor by Utopian Landscapes
1234 Holly Lane / North Pole, Alaska
555.555.5555
www.ChristmasDecor.net



No Offer

The Christmas Decor differences add up to a convenient, joyful holiday season for you with:

- Stunning and Impeccable Designs
- Fully Insured, First-Class Expertise
- Proactive Maintenance
- Hassle-Free Take Down & Storage

We know how time consuming decorating for the Holidays can be not to mention how frustrating tangled lights, extension cords and ladders can all be. So, contact us right away and let us transform your home's distinctive exterior into a dazzling winter wonderland.

Happy Holidays!

Christmas Decor
by Utopian Landscapes
1234 Holly Lane / North Pole, Alaska
777.777.7777 • 555.555.5555
www.ChristmasDecor.net



Item #439

100 Postcards.....	\$45.82	2,500 Postcards.....	\$498.53
250 Postcards.....	\$64.36	5,000 Postcards.....	\$558.09
500 Postcards.....	\$100.52	7,500 Postcards.....	\$606.01
1,000 Postcards.....	\$184.45	10,000 Postcards.....	\$656.41
1,500 Postcards.....	\$259.68	20,000 Postcards.....	\$913.60

Large Postcards

A large postcard (8.5x5.5) with the choice from three front images and four back messages. Produced in 5 days.

Front Design Choices:



Back Design Choices:

"Do Not Have. . ."

Because most of us really don't have:

- enough time
- a love of climbing ladders
- the right amount of patience
- all the right lights and decorations

for holiday decorating, there's Christmas Decor. We'll decorate your home correctly, promptly and do it with the greatest attention to detail giving you that perfect holiday look.

We're a great way to simplify your holiday season. Contact us for a free estimate today!

Christmas Decor
by Utopian Landscapes
1234 Holly Lane / North Pole, Alaska
777.777.777
555.555.5555
www.ChristmasDecor.net



Special Offer

You'll find Christmas Decor a convenient option to making your holiday decorating very, very easy because we:

- Produce Impeccable and Stunning Designs
- Are Fully Insured
- Provide First-Class Expertise
- Deliver Pro-Active Maintenance
- Provide No-Worry Take Down

Contact us today about saving
**20% on a hassle-free,
holiday decorating experience!**
(Offer Ends October 31, 2009)

Christmas Decor
by Utopian Landscapes
1234 Holly Lane / North Pole, Alaska
777.777.7777 • 555.555.5555
www.ChristmasDecor.net



"Q&A"

Q: Why let the chores of the season get in the way of the joys of the season?

A: Don't! We'll decorate your home correctly, promptly and with the greatest attention. Our trained and insured decorating experts will transform your home into a holiday wonderland.

Contact us right away to simplify your holidays so you can enjoy with one less thing to worry about.

Christmas Decor by Utopian Landscapes
1234 Holly Lane / North Pole, Alaska
555.555.5555
www.ChristmasDecor.net



No Offer

The Christmas Decor differences add up to a convenient, joyful holiday season for you with:

- Stunning and Impeccable Designs
- Fully Insured, First-Class Expertise
- Proactive Maintenance
- Hassle-Free: Take Down & Storage

We know how time consuming decorating for the Holidays can be not to mention how frustrating tangled lights, extension cords and ladders can all be. So, contact us right away and let us transform your home's distinctive exterior into a dazzling winter wonderland.

Happy Holidays!

Christmas Decor
by Utopian Landscapes
1234 Holly Lane / North Pole, Alaska
777.777.7777 • 555.555.5555
www.ChristmasDecor.net



Item #440

100 Postcards.....	\$60.41	5,000 Postcards.....	\$525.59
250 Postcards.....	\$113.60	7,500 Postcards.....	\$578.22
500 Postcards.....	\$197.91	10,000 Postcards.....	\$691.79
1,000 Postcards.....	\$323.46	20,000 Postcards.....	\$1,334.65
1,500 Postcards.....	\$370.14	25,000 Postcards.....	\$1,616.46
2,000 Postcards.....	\$399.26	50,000 Postcards.....	\$3,026.03

Posters

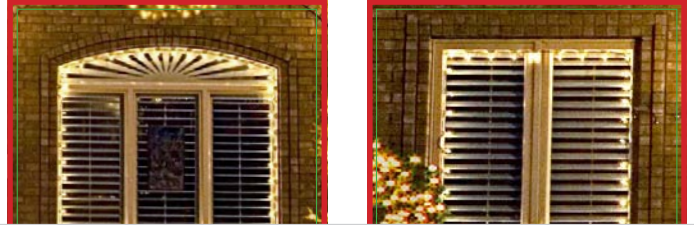
“Dream House” Poster

12x18 laminated sales photo sheet to help you demonstrate different lighting techniques to help clients see how you’ll accentuate the unique architectural and landscape elements of their homes. Produced in 3 days.

Ridge & Fascia Lighting



Window Mini-Lighting



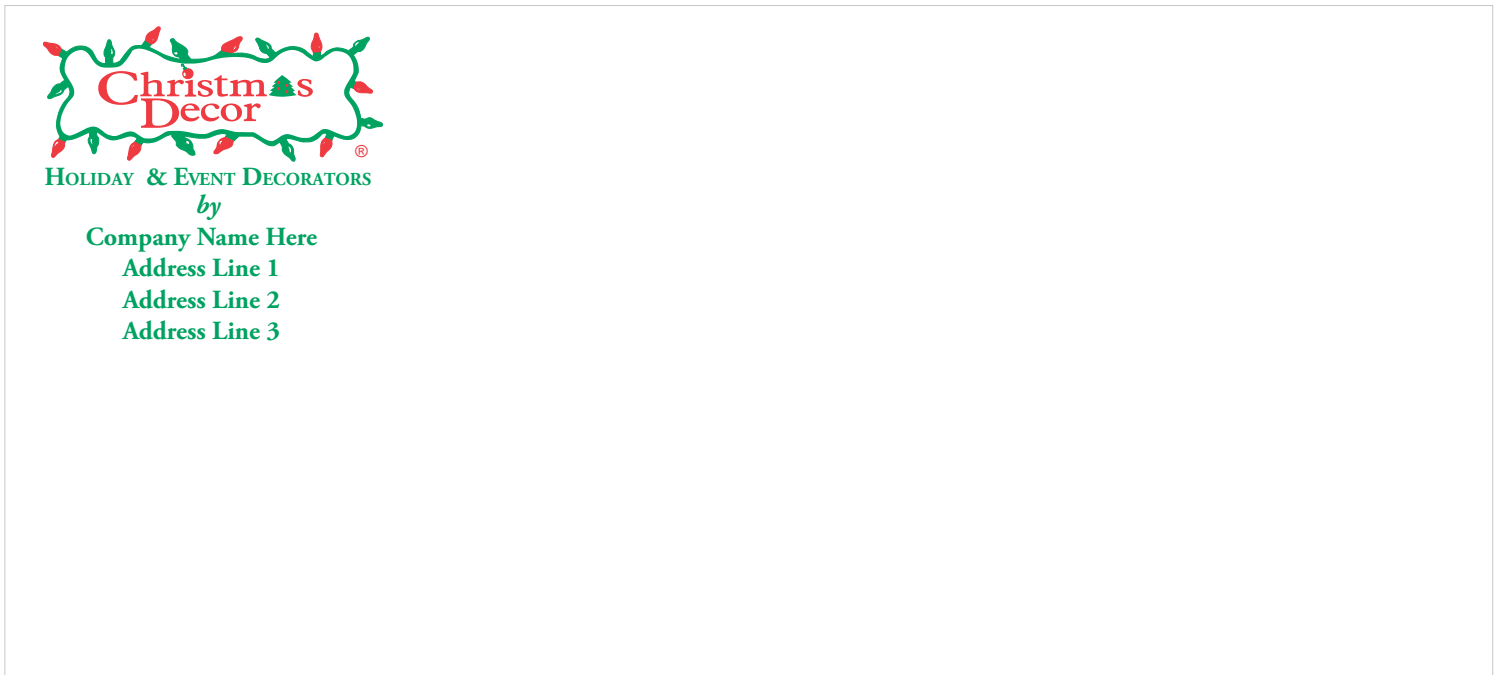
Item #455

1 Poster	\$13.45	3 Posters	\$34.15
2 Posters	\$24.66	4 Posters	\$49.95

Stationary

Two-Color Envelopes

A two-color (red and green) #10 envelope with the Christmas Decor logo. Customizable with your company name and contact information. Produced in 5 days.



Item #156

250 Envelopes	\$89.79	1,500 Envelopes	\$254.47
500 Envelopes	\$124.75	2,000 Envelopes	\$309.77
1,000 Envelopes	\$192.20	2,500 Envelopes	\$363.89

Two-Color Letterhead

A two-color (red and green) branded letterhead with the Christmas Decor logo in the upper-left corner. Customizable with your own company name and contact information. Produced in 5 days.



Item #158

250 Letterheads.....	\$97.09	1,500 Letterheads.....	\$288.02
500 Letterheads.....	\$138.61	2,000 Letterheads.....	\$352.96
1,000 Letterheads.....	\$218.26	2,500 Envelopes.....	\$416.83

Thank You Cards

A Packet of Thank You Cards and Matching A2 Envelopes. This item is not customizable. Produced in 3 Days.



*“With thanks
and appreciation during
the Holidays
and always.”*

Item #471

50 Cards.....\$53.47 100 Cards.....\$106.94

Gift Cards

A gift card to hand out to potential clients. This packet comes with gift cards you can customize with your own offer and company information, a non-customized gift card holder, and a non-customized envelope to place it in. Produced in 6 days.



Item #472

50 Cards.....	\$71.17	200 Cards.....	\$149.00
100 Cards.....	\$102.95		

Scratch-Off Referral Cards

A ticket with a scratch-off area your client can use to refer a friend and both will receive a discount on future services. You can customize the monetary value offered and add your company name and contact information. Produced in 6 days.



Item #470

250 Cards.....	\$88.97	1,000 Cards.....	\$197.57
500 Cards.....	\$123.86		

Yard Signs

What better way to advertise your services than to place this yard sign in front of one of your beautiful displays? Choose either the new Red Design or the Classic White Design. Both include a "Quick Response" code to the CDI Website and Facebook Button. Customize with your phone number. Stakes included. Produced in 3 days.

Another Holiday Display By

Christmas Decor

www.ChristmasDecor.net

Find us on Facebook

###-###-####

Items #500 (Red), #420 (White), #504 (LED)

10 Signs.....	\$101.13	50 Signs.....	\$402.94
25 Signs.....	\$206.43	100 Signs.....	\$753.82

Dedicated CDI Catalog Support:

 (866) 653-9401 |  info@action-printing.com |  [action-printing.com](https://www.action-printing.com)



2407 82nd Street
Lubbock, TX 79423
1 (888) 226-5533
www.Action-Printing.com

